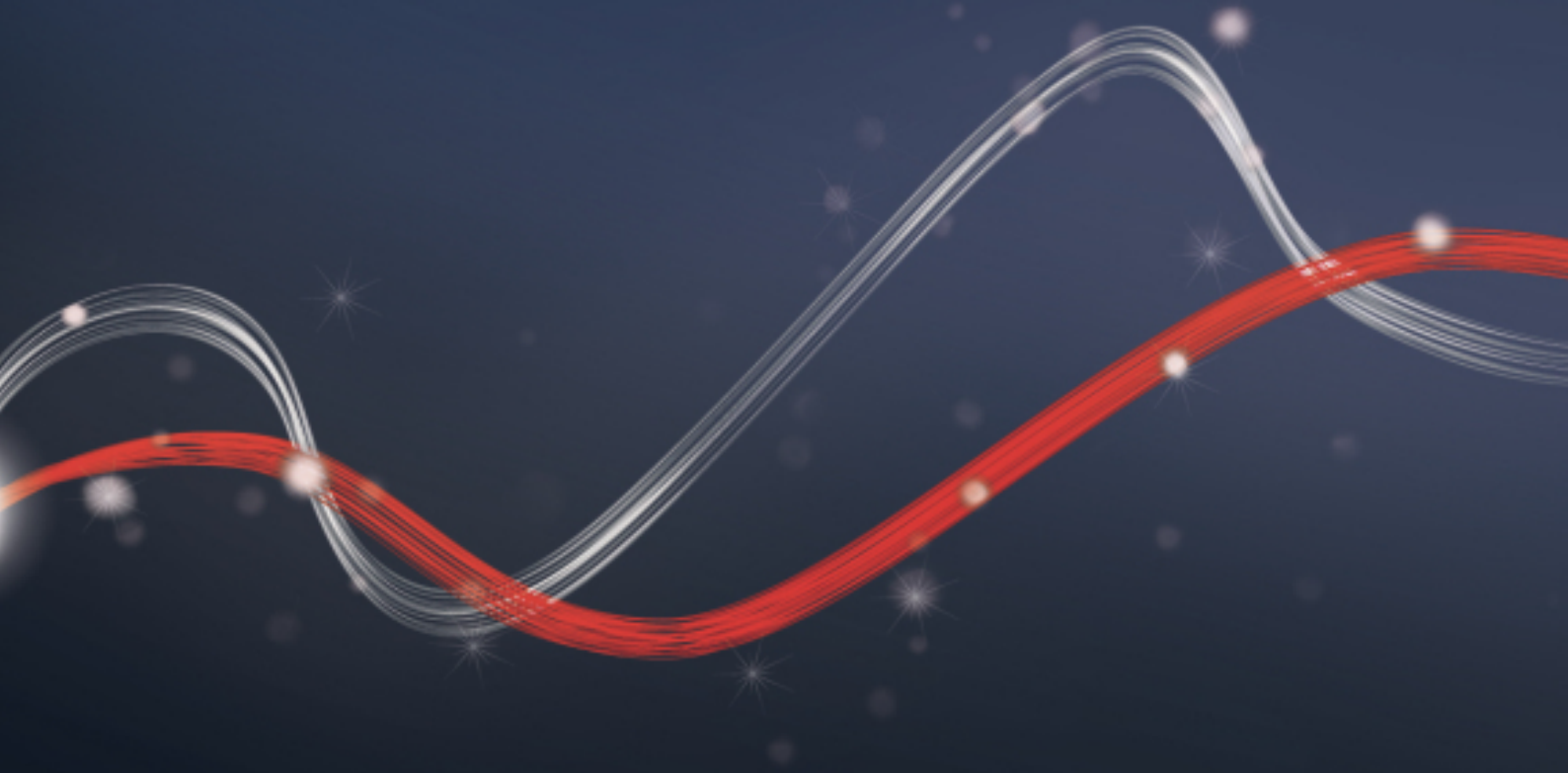




Be ahead



# DESME



• Product

• TECHNICAL FEATURES

• ACCESSORIES

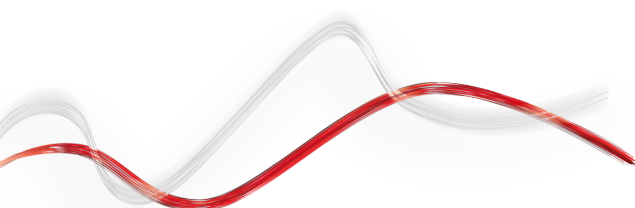
• DISCOVER U-LINK



Design, innovation and technology. These are the messages conveyed by the new range of photocells, which perfectly combine elegance, practicality, safety, ergonomics and functionality. The range includes adjustable and fixed photocells to cover every installation requirement.

**DESME** | |

Code	Name	Description
P111527	DESME A15 O	Pair of photocells adjustable 40 ° horizontally and 10 ° vertically. IR signal synchronised to prevent any risk of blinding. Range 30 m. Power supply 24 V ac/dc.
P111526	DESME A15	Pair of self-aligning photocells. Range 30 m. Power supply 24 V ac/dc. Pair of self-aligning photocells. Range 30 m. Power supply 24 V ac/dc.





# DESME



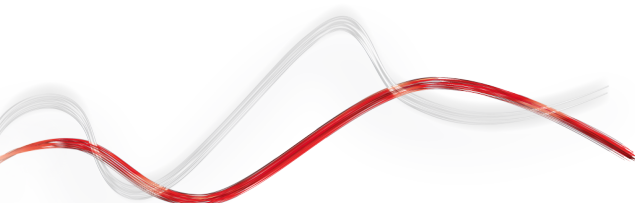
· Product

· TECHNICAL FEATURES

· ACCESSORIES

· DISCOVER U-LINK

	DESME A15 O	DESME A15
Voltage		24 V
Horiz. adjustment	40 °	
Vert. adjustment	10 °	
Range		30 m
Protection rating		IP55



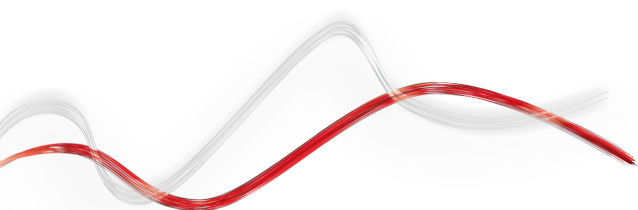
· Product

· TECHNICAL FEATURES

· ACCESSORIES

· DISCOVER U-LINK

	Code	Name	Description
	P903018	<b>PHP</b>	Pair of aluminium posts for THEA/DESME series photocells Height 522 mm
	P903019	<b>PHP2</b>	Pair of double aluminium posts for THEA/DESME series photocells. Height 1038 mm
	P903021	<b>PHP ADA CC</b>	Pair of adapters for the installation of THEA/DESME photocells on CC posts
	P903022	<b>PHP BI</b>	Dual-face adapter for THEA/DESME photocells
	P903023	<b>PHP BA1</b>	Support for mounting THEA/DESME photocells on Giotto, Moovi and Michelangelo enclosures
	P903024	<b>ACV20</b>	Vandal-proof protection for DESME photocells
	P903020	<b>APL</b>	Pair of foundation plates for PHP posts



· Product

· TECHNICAL FEATURES

· ACCESSORIES

· DISCOVER U-LINK

# What is U-Link?

The innovative technology that gives you new power

An exclusive Bft innovation: U-Link (Universal Link) is an exclusive Bft platform that allows the creation of technological ecosystems. In Home Automation Access, it allows communication with all the home access automation devices of any brand. So you save time and can control everything with ease, without any worries.

## It is intuitive

Easy to install and use

## It is scalable

Allows an unlimited number of devices to be added

## It is flexible

Allows the creation of groups of interconnected products

## It is practical

Works with or without a web connection

## It is functional

Parameters can be controlled remotely via dedicated applications

## All in one scheme: discover this amazing technology

A unique platform **allowing the creation of technological ecosystems** offering a wide range of solutions for different sectors.

Thanks to the B-Eba cards and the Clonix U-Link receiver, this proprietary platform featured by Bft products adapts to any protocol and access automation product (even BFT, non-native U-Link or non-BFT products), and is used in various sectors. Each device thus becomes smart and can be interconnected with other systems, thanks to a language that becomes universal.

### U-Base 2



Software to install and easily and comfortably carry out maintenance and identify any malfunction of U-link compatible operators.

### U-SDK



U-SDK is the innovative application that can make Bft automation systems compatible and easily integrated with a BMS network for the supervision of buildings.



### Magistro

An innovative and easy to install system for easily managing all home automation systems.



### U-Control

U-Control is the application that helps the quick and easy integration of BFT automation systems in large building management systems.



### Blue-Entry

Technology abreast of the times and attentive to daily needs: thanks to the use of U-link the house gate can now be opened with just your smartphone.



### Clonix U-Link

Allows the connection of non-native U-Link products or non-Bft products to U-Link systems.

Bft operators, non-native U-Link products or a product belonging to other brands: can they be connected to U-Link? Yes, thanks to the Clonix receivers. Accessories that know no limits.

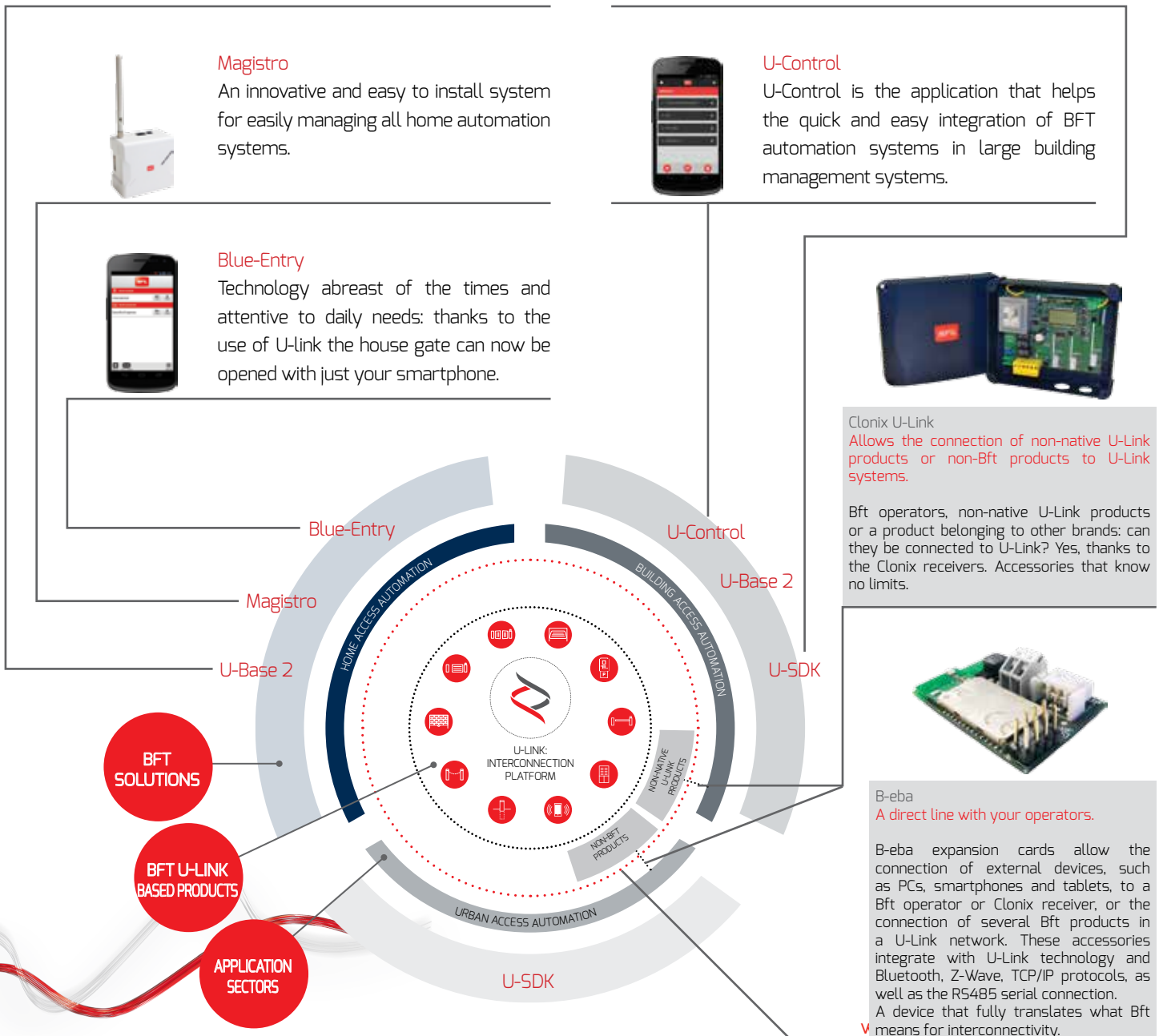


### B-eba

A direct line with your operators.

B-eba expansion cards allow the connection of external devices, such as PCs, smartphones and tablets, to a Bft operator or Clonix receiver, or the connection of several Bft products in a U-Link network. These accessories integrate with U-Link technology and Bluetooth, Z-Wave, TCP/IP protocols, as well as the RS485 serial connection.

A device that fully translates what Bft means for interconnectivity.





INFORMATION REGARDING THE PROTECTION OF THE INDUSTRIAL AND INTELLECTUAL PROPERTY RIGHTS OF BFT. BFT S.p.A. protects its industrial property by depositing trademarks, patents, models and designs. The intellectual property of BFT S.p.A. is protected by copyright law. BFT S.p.A. also protects its know-how by taking measures to protect the technical and commercial information inherent in its company and products. All the products in this catalogue are ORIGINAL BFT MODELS and only BFT S.p.A is authorised to produce them and market them anywhere in the world. All the commercial names in this catalogue are owned by BFT S.p.A., and only BFT S.p.A. is authorised to use them in relation to the corresponding merchandise category. FALSIFIERS WILL BE PROCEEDED AGAINST IN ACCORDANCE WITH BOTH CIVIL AND CRIMINAL LAW. THESE CONDITIONS NOT ONLY GUARANTEE THE INTELLECTUAL PROPERTY RIGHTS OF BFT, BUT ALSO PROTECT CUSTOMERS BY GUARANTEEING THAT THE PRODUCTS THEY ARE PURCHASING ARE ORIGINAL BFT PRODUCTS RESULTING FROM STUDIES AND DESIGNS WITHIN THE BFT COMPANY.